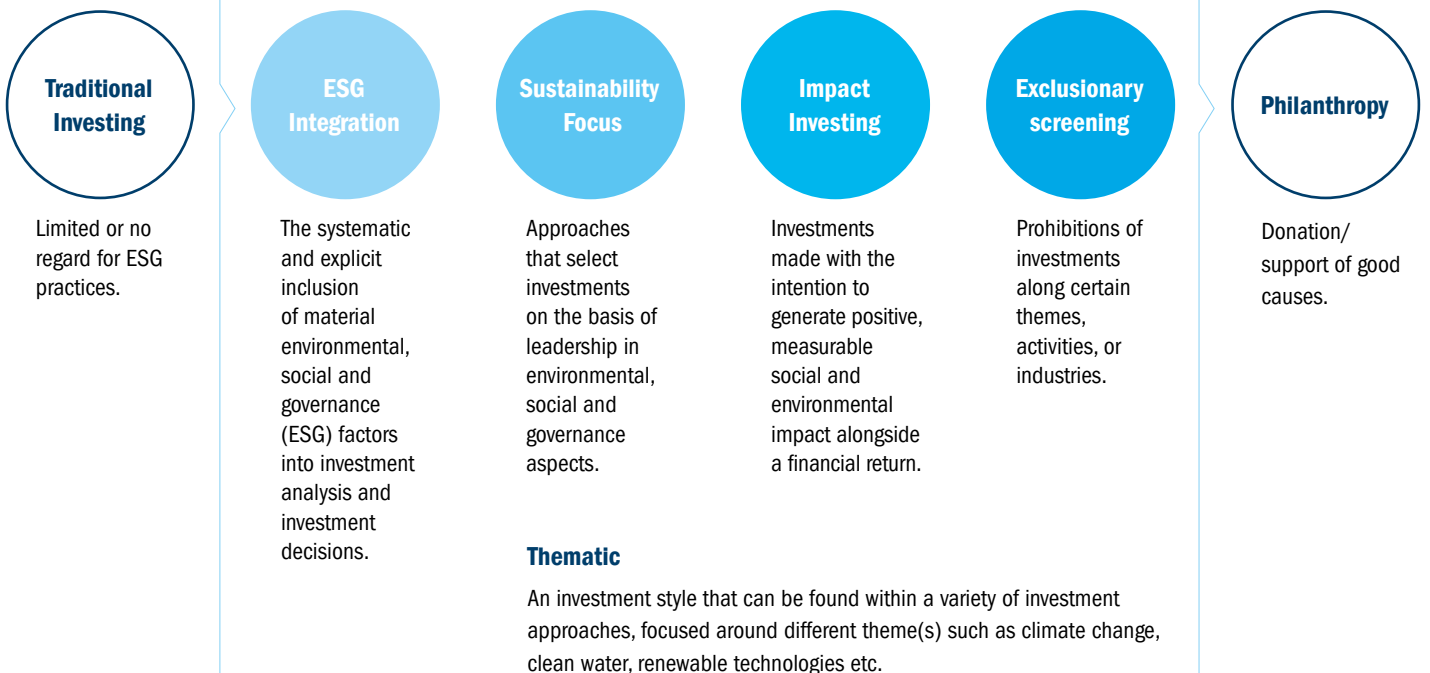


# The spectrum of responsible investing choices



Responsible investing is a broad umbrella under which different approaches fall. Although responsible investment is moving mainstream, its reach, related components and associated jargon can prove daunting. We have incorporated the Investment Association (IA) definitions into this spectrum to make things easier. The approaches described below are not mutually exclusive and typically a combination will be used.

## Spectrum of responsible investment approaches



### Risks to consider

Remember that investing responsibly is still investing. The value of investments can go down as well as up as a result of market movements. You may not get back the original amount invested. Screening out sectors or companies may result in less diversification and hence more volatility in investment values.

## Identifying the most suitable Responsible Investment solution to meet your objectives

Objective Examples	Approach	Description
I want my investment to have full access to the whole investable universe. However, I would like Environmental, Social and Governance considerations as part of the ongoing investment decision making process.	<b>ESG Integration</b>	In addition to the traditional analysis of companies, Environmental, Social and Governance (ESG) factors are considered to help filter out companies with poor ESG scores, to reduce risks within the investment and potentially increase returns.
I want to invest in companies that are clearly leaders across environmental, social and governance topics in their industries.	<b>Sustainable Investing</b>	Predominantly investing in companies that lead within their industry across all sustainability themes. This can typically include companies that are trying to excel in issues such as the efficient use of resources, limiting carbon emissions, or enhancing diversity.
I want to invest in companies that make a measurable impact on society and a positive contribution to the future of the planet.	<b>Impact Investing</b>	Impact investing is more focused on generating a social or environmental benefit that can be measured for impact. The focus may not solely be on investment returns. These types of investments might follow a theme and support companies that, for example, save a quantifiable amount of water or avoid producing a certain amount of carbon dioxide.
I want to avoid investments in certain industries that are at odds with my values.  I understand that excluding these businesses might make my investment perform differently from the marketplace.	<b>Exclusionary screening</b>	This type of investment should have a clear, well defined policy on the areas that are excluded.  Companies may be excluded based on their involvement in controversial products or services. Classic examples would be fossil fuels, controversial weapons, or tobacco.

**Please note:** All these approaches are not mutually exclusive. It may be possible to achieve your specific requirements within a single investment that harnesses multiple responsible investment approaches.

To help you identify the most suitable Responsible Investment solution for you, please discuss with your financial adviser.

To find out more visit [columbiathreadneedle.com](https://columbiathreadneedle.com)



© 2022 Columbia Threadneedle Investments. Columbia Threadneedle Investments is the global brand name of the Columbia and Threadneedle group of companies.

For professional investors only. This financial promotion is issued for marketing and information purposes only by Columbia Threadneedle Investments in the UK.

The Fund is a sub fund of Columbia Threadneedle (UK) ICVC II, an open ended investment company (OEIC), registered in the UK and authorised by the Financial Conduct Authority (FCA).

English language copies of the Fund's Prospectus, summarised investor rights, English language copies of the key investor information document (KIID) can be obtained from Columbia Threadneedle Investments, Exchange House, Primrose Street, London EC2A 2NY, telephone: Client Services on 0044 (0)20 7011 4444, email: sales.support@columbiathreadneedle.com or electronically at [www.columbiathreadneedle.com](http://www.columbiathreadneedle.com). Please read the Prospectus before taking any investment decision.

The information provided in the marketing material does not constitute, and should not be construed as, investment advice or a recommendation to buy, sell or otherwise transact in the Funds. The manager has the right to terminate the arrangements made for marketing.

Financial promotions are issued for marketing and information purposes; by Columbia Threadneedle Management Limited, authorised and regulated in the UK by the Financial Conduct Authority in Switzerland by Columbia Threadneedle Management (Swiss) GmbH, acting as representative office of Columbia Threadneedle Management Limited; and in the Middle East distributed by Columbia Threadneedle Investments (ME) Limited, which is regulated by the Dubai Financial Services Authority (DFSA). For Distributors: This document is intended to provide distributors with information about Group products and services and is not for further distribution. For Institutional Clients: The information in this document is not intended as financial advice and is only intended for persons with appropriate investment knowledge and who meet the regulatory criteria to be classified as a Professional Client or Market Counterparties and no other Person should act upon it.

195906 (05/22). UK.